

Recombinant AQP1 Monoclonal Antibody

catalog number: AN301403L

Note: *Centrifuge before opening to ensure complete recovery of vial contents.*

Description

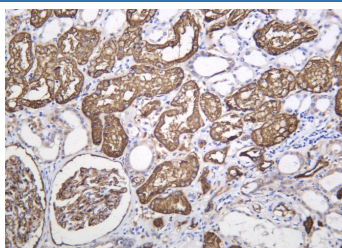
| | |
|---------------------|---|
| Reactivity | Human;Mouse;Rat |
| Immunogen | Recombinant Human AQP1 protein |
| Host | Rabbit |
| Isotype | IgG, κ |
| Clone | B1170 |
| Purification | Protein A |
| Buffer | PBS, 50% glycerol, 0.05% Proclin 300, 0.05% protein protectant. |

Applications

Recommended Dilution

| | |
|--------------|----------------|
| IHC | 1:1000-1:4000 |
| WB | 1:2000-1:10000 |
| IF | 1:200-1:1000 |
| ELISA | 1:5000-1:20000 |

Data



Immunohistochemistry of paraffin-embedded human kidney using Recombinant AQP1 Monoclonal Antibody at dilution of 1:200.

Preparation & Storage

| | |
|-----------------|---|
| Storage | Store at -20°C Valid for 12 months. Avoid freeze / thaw cycles. |
| Shipping | Ice bag |

Background

This gene encodes a small integral membrane protein with six bilayer spanning domains that functions as a water channel protein. This protein permits passive transport of water along an osmotic gradient. This gene is a possible candidate for disorders involving imbalance in ocular fluid movement.

For Research Use Only